



# RAISE Learning Powers

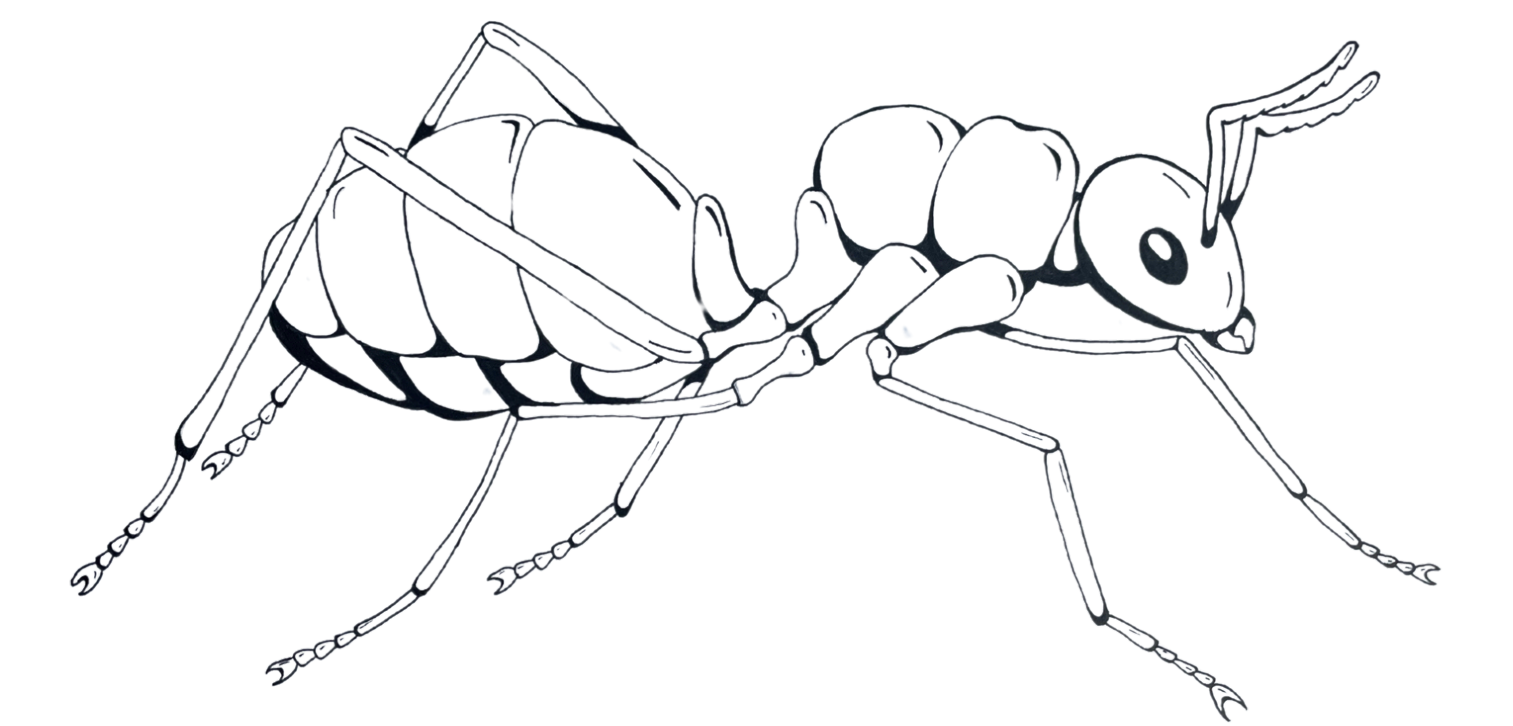
## Behaviour for Learning and development of our Learning Culture

We have developed a Learning Culture at Spring Hill on Shirley Clarke's Formative Assessment.

This starts in each year group by getting the children to understand what makes a good attitude for learning. By using an analogy based on the brain being seen as a muscle, the children quickly understand that 'intelligence' is owned by everyone. By putting in effort, as we do in growing muscles through exercise, all children are intelligent and grow their intelligence through effort and owning a 'Growth Mind-set'.

A 'Growth Mind-Set' is achieved by knowing: all intelligence is expandable, challenge is embraced, to persist in the face of setbacks, see effort as the way and learn from constructive feedback. Children realise that through this they can reach ever higher levels of achievement and their full potential. The sky really is not the limit but just the beginning! The children learn, through a combination of a series of lessons, and being introduced to five learning powers as animals, how to become the most successful learner they can be.

Here we introduce you to the five learning characteristics and skills:



We RAISE!



# RAISE Learning Powers

## Responsibility Rhino



1. Listen to others
2. Be sensitive when you don't understand
3. Kind when you don't agree
4. Manage distraction
5. Be tolerant

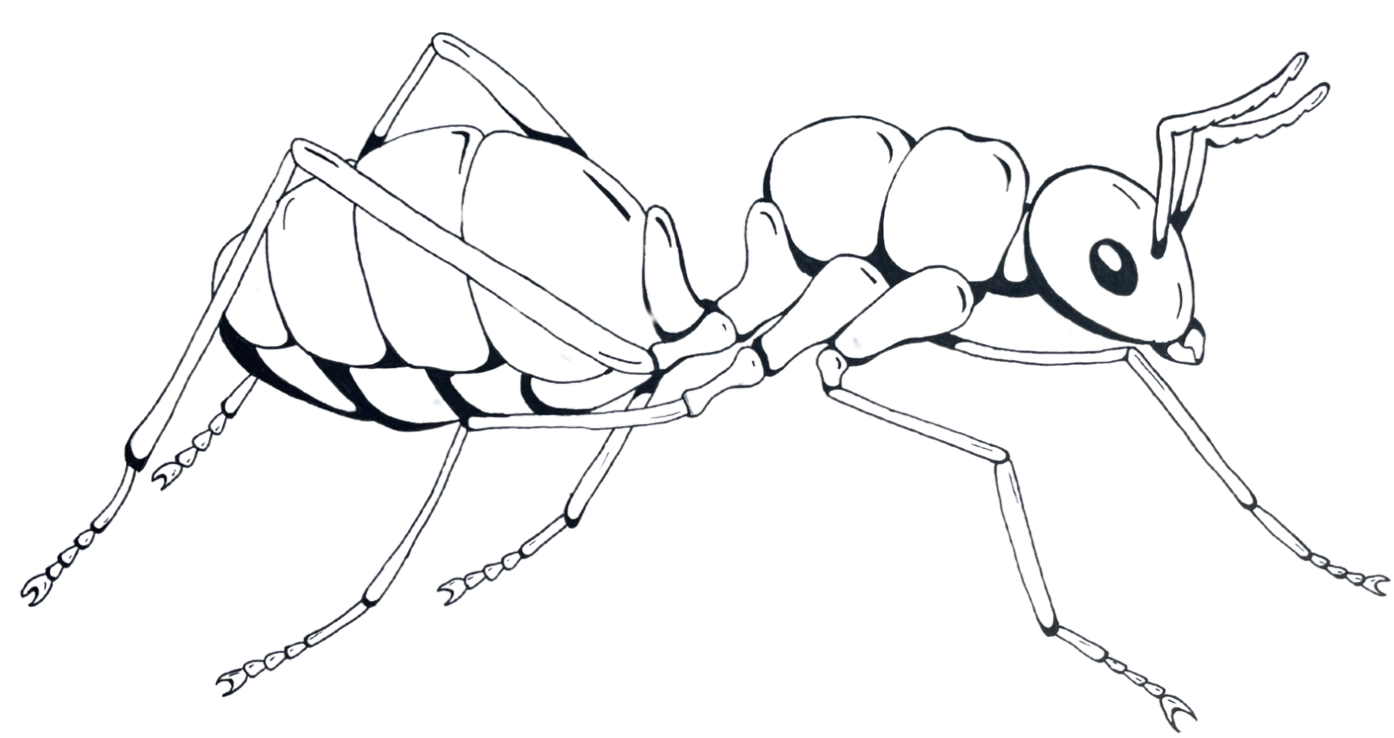
Our RAISE values are very important to us. We want children to leave Spring Hill having become responsible, aspirational, inclusive and empowering individuals who serve their community. Through our learning animals, we explicitly teach children how we can demonstrate these values everyday in our learning. **Our RAISE powers outline what learners at Spring Hill should demonstrate to develop a love of learning and internalise our school values so they are part of every individual child's character.**

## Service Sloth



1. Use what you have learnt in the wider world
2. Keep yourselves, others and the environment safe
3. Inviting others to join you
4. Explain things to help others
5. Teach someone a new skill

## Aspirational Ant



1. Be creative and let your imagination go
2. Work hard and practice lots
3. Try new strategies
4. Ask for help
5. Be excited to try new things

## Inclusivity Iguana



1. Take a brain break
2. Break things down
3. Notice things
4. Include your learning partners
5. Show love and kindness to others

## Empowerment Eagle



1. Feel proud of your achievement
2. Identify your best bits
3. Show others how to be ready for learning
4. Be resilient
5. Be proud of your mistakes

We RAISE!



# RAISE Character Development



## Responsibility Rhino

It is important that our children understand their responsibility to be understanding and tolerant of others regardless of their background. We challenge children's misconceptions and encourage children to develop their knowledge of our diverse world. We do this through:

### Diversity Week

History units throughout our history curriculum  
Workshops from the Equality and Diversity Team



We use our RAISE values to develop character within each individual. Through our curriculum, our curriculum enhancements we teach children and provide all classes with first hand learning experiences for all of our values. We discuss British Values in our assemblies and throughout our comprehensive PSHE Curriculum. Our school council are voted into their positions following a speech to peers. We teach our children that this is a form of democracy.

We encourage all our pupils to take part in the wide range of clubs we have available such as chess club, martial arts, arts and crafts, multi-sports, basketball, choir and computing club. We offer a wide range of opportunities to compete in sporting events and musical performances.

We provide a programme of outdoor learning opportunities such as Forest School lessons as well as Musical performances, poetry recitals and further curriculum enhancements.

## Service Sloth

We teach our children to be empathetic and compassionate to others and how it is our moral obligation to help those less fortunate than us. We support children in need, Palestine refugees Macmillan, Comic relief, and then world events as they happen. We develop Service through:

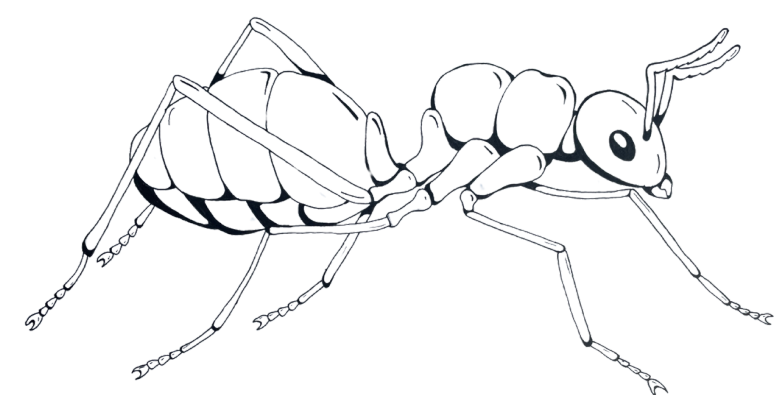
### Service Week

During service Week, each class will raise money for a chosen charity or will support our local community by 'giving back' e.g. litter picking, singing in the residential home.

Young leaders- we have Prefects, Lancashire Lions, Librarians and young leaders for break times.



## Aspirational Ant



We want our children to know that the sky is not the limit but just the beginning! We want children to know where the skills they learn can be used when they are older. We want children to always show kindness and make others happy. We develop aspirations through:

### Career Week

A week of workshops and guest speakers who discuss their careers, how they secured their role and the skills required.

Music performances  
Anti-bullying Week



## Inclusivity Iguana

We want children at Spring Hill to be inclusive children. From our school environment to our enhanced curriculum we pride ourselves on developing this even further. we do this by:

**Neurodiversity Week-** to raise the profile of neurodiversity and develop awareness and understanding.

**Mental health awareness sessions during the national awareness week**  
**E-Safety Week**



## Empowerment Eagle

It is important for learners at Spring hill to be confident, develop a bounce back attitude when mistakes happen. Our empowerment Eagle supports this development. We also celebrate individuality and frame our pride in one another through:

**Celebration of learning assemblies**  
**Class assemblies**

**Displaying marvellous mistakes**  
**Allowing children to choose work they are proud of to display each half term.**



# We RAISE!